

# Instruction Manual Girls Mini Bubble Car W431E

Information on Waste Disposal for Consumers of Electrical & Electronic Equipment

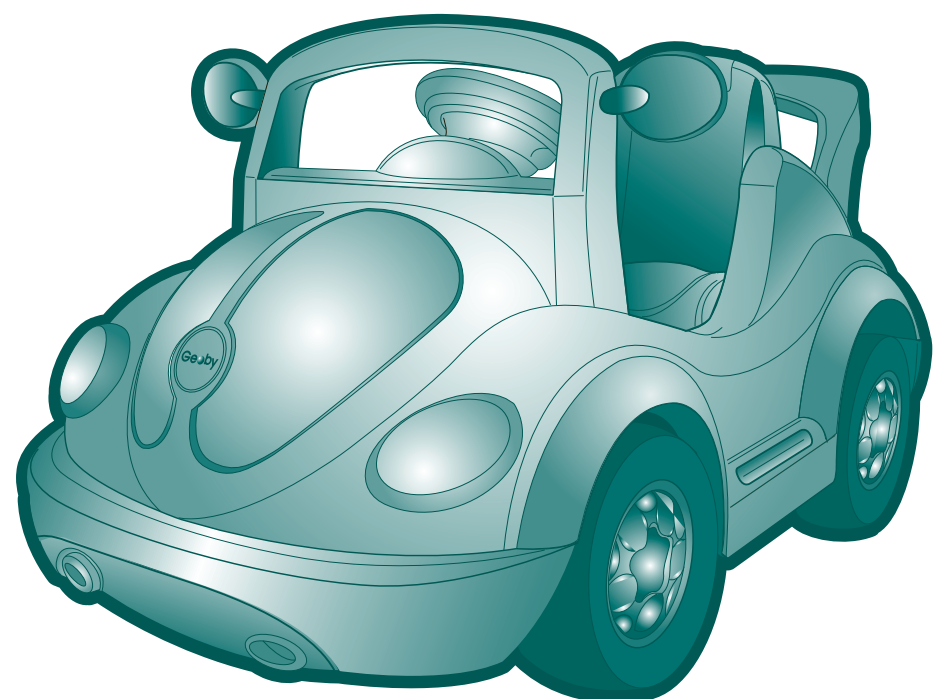
This mark on a product and/or accompanying documents indicates that when it is to be disposed of, it must be treated as Waste Electrical & Electronic Equipment (WEEE). Any WEEE marked waste products must not be mixed with general household waste, but kept separate for the treatment, recovery and recycling of the materials used. For proper treatment, recovery and recycling; please take all WEEE marked waste to your Local Authority Civic waste site, where it will be accepted free of charge. If all consumers dispose of Waste Electrical & Electronic Equipment correctly, they will be helping to save valuable resources and preventing any potential negative effects upon human health and the environment, of any hazardous materials that the waste may contain.



## Please Recycle Your Spent Batteries

Batteries should not be disposed of in unsorted municipal waste, but separately collected to facilitate the correct treatment and recycling of the substances they contain. The recycling of batteries ensures the recovery of these valuable materials and prevents any potentially harmful effects upon both the environment and human health. Please contribute to battery recycling by segregating all spent batteries and actively participating in their collection and recycling. Various battery collection schemes will be in operation in different areas of the country. However, battery collection bins will be available at retail stores that sell batteries as well as at schools, libraries and other public buildings.

- With forward and reverse drive
- Multi function steering wheel with sound and light functions
- Rubber tread band to prolong life of tyres and improve grip



● Thank you for purchasing our ride on vehicle, we wish your child enjoy it for years to come. Please read the instruction guide carefully before using it.

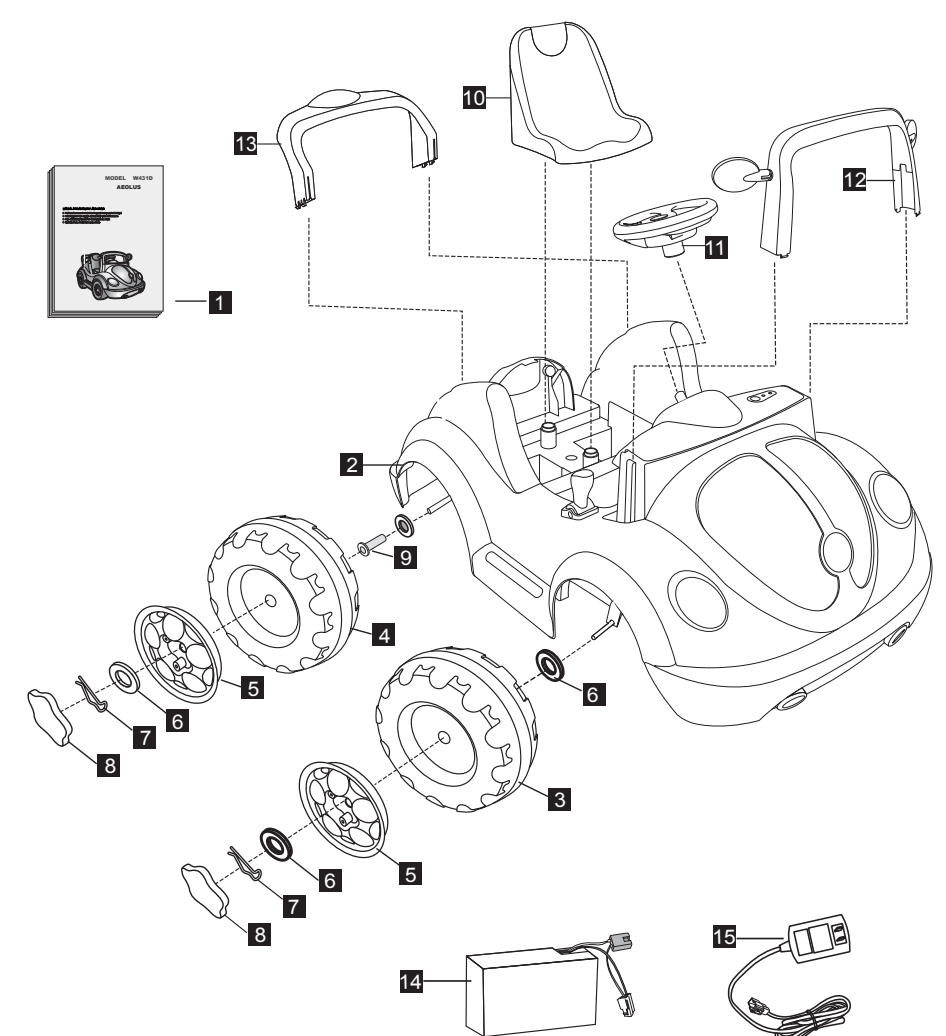
## SPECIFICATION

NAME	Spec
Battery	6V7AH
Motor	drive 6V 15W
Age	>37 month
Max. Load	35kg
Size	1000X600X590 mm
Speed	3-4 km/h
Time for use	charge 8-12 hours. use 1-2hours
Charger	output DC6.0V 0.6A
Fuse	20A

## NOTES OF CHARGING

1. Before your first driving, charge the battery for 12 hours before the vehicles first used.
2. Connect the terminal of battery and charger, and then plug the charger into the 230-240V AC mains socket.
3. Please charge 8-12hrs after driving 1-2hrs, the charging time cannot exceed 20hrs.
4. When the riding speed is slower than the normal level, recharge right now for 8-12 hrs.
5. If the car has a long time not being used, please fully charge the battery, then charge once per 3 months, to extend the battery's life.
6. If the charger is hot (but under 71°C) while charging, that's normal.
7. The car must use the special charger supplied with it to avoid damage of the charger, battery and circuit.
8. Battery charging must be performed by adult!
9. Non-rechargeable batteries must not be recharged.
10. Only batteries of the same or equivalent type as recommended are to be used.
11. Batteries must be inserted with the correct polarity.
12. Exhausted batteries should be removed from the body.
13. The supply terminals must not be short circuit.
14. Do not mix old and new batteries.

## PART NAME



1	manual	7	pin	13	spoiler
2	car body	8	hub cap	14	battery
3	front wheel	9	spacer	15	charger
4	rear wheel	10	seat		
5	rim	11	steering wheel		
6	washer	12	front window frame		

## ASSEMBLE INSTRUCTION

1. Install steering wheel (P1)  
Assemble the Steering wheel Insert the Plug and Connector together at Steering wheel and Steering column, then tighten all wires. Make sure the Steering wheel put at correct orientation as picture showed and fix it by the screw and nut provided. Do not damage or trap the wires during assembly. Do not hit the buttons on Steering wheel hardly.
2. Assemble the front window frame: (p2)  
First pull the front window frame outwards and position it into the protruding platform, then press the frame into the fixing slots. When hearing the sound click, it shows that the frame is in the position.
3. Assemble the spoiler: (p3)  
Put the side long slot into the "T"- shape bar, and press down. When the click sound heard, it shows that it is positioned in the right place.
4. Install battery  
Connect the battery terminal with circuit together, (the fuse of this car is thermal fuse, which will protect the car circuit when there is any circuit failure, and automatically recover after the failure is cleared.)
5. Install seat  
Fix the seat over the battery compartment, and turn the two screws on the seat to lock position.
6. Removing seat  
Turn the screws from lock to open position, then pull the seat out of car.

## ASSEMBLE INSTRUCTION

7. Assemble the front wheels  
Put on the washer and front wheel to the front axle, align the bushing with wheels. Put on the wheel hub, and then insert another washer, lock the snap-pin onto the hole of wheel axle. Cover the hub cap lastly and complete the wheels assembly.
8. Assemble the rear wheels  
Put on the rear wheel to the front axle, align the spacer with wheels. Put on the rim, and then insert another washer, lock the snap-pin onto the hole of wheel axle. Cover the hub cap lastly and complete the wheels assembly.

## USING INSTRUCTION

1. forward and backward of car (picture 1)
  - 1.1: Driver sit steady, power set to "1", pedal gear stick switch to forward, step on the pedal to ride forward, loose to stop.
  - 1.2: Gear stick switch to backward, step on the pedal to ride backward, loose to stop.
2. Emulational car steering wheel, easy to operate, different music buttons have different music, press the start button for the sound "the car start, be seated". when press the left/right button, with the sound "turn left/turn right".
3. Turn the two screws on the seat to unlock position, and remove the seat. Unplug the terminals of battery and car circuit; and then connect the terminals of battery and charger, plug the charger to mains afterwards.
4. Change fuse. If the fuse broken, open the cover board, unscrew the fuse socket, and then change it with new fuse.

## TROUBLE SHOOTING

Trouble Types	Cause Analysis	Removing method
cannot move	1. low voltage 2. wheel fixing pin loose 3. battery terminal connector detach 4. battery damaged 5. Electric parts broken 6. motor broken 7. R/C battery no power	recharge battery fix the pin again re-connect  change new battery repair repair change new battery
Fail to charge	1. battery terminal connector loose 2. no power 3. charger broken	connect again connect again change charger
cannot move long	1. battery is not full 2. battery aging	recharge battery full change battery
battery has voice and heat when charging	1. Chemical Reaction	normal
Speed slow	1. old battery 2. no power 3. over load 4. road is not level	change battery recharge full weight should be under 35kg move on the level road
Noise of gear box	1. gear broken	repair
car shaking when moving	1. loose contact of motor 2. motor conctage	re-connect re-appear
car moving but sound/light function bad	1. loose contact of steering wheel connector 2. sound-light board broken	re-connect repair
cannot stop the car	1. Electric part damaged	repair

If cannot remove the troubles, please contact for repairing service.

## CAUTIONS

1. Must not ride on the street, highway, slope, sand, or any dangerous places.
2. Must ride on even ground.
3. Must ride without overload.
4. Battery charging must be performed by adult.
5. Children's riding must be guided by adults.
6. Do not change the circuit of the vehicle or it's attaching electric equipments.
7. Do not ride in water, or other fluid to the vehicle.
8. Do not push Backward/Forward switch when riding.
9. When meeting barriers, just loose the pedal switch, turn away from the barriers, march on.
10. Please charge in time when the vehicle runs slowly otherwise life-span of battery will be reduced.
11. Please charge the battery fully, before keep it for long time then recharge it per 3 months to prolong life-span of battery.
12. Don't ride in a rainy day.
13. Battery, charger, electric wire, plug, enclosure and other parts should be periodically check for damage, if have damage, need to repair before use.
14. "Transformers used with the toy are to be regularly examined for damage to the cord, plug, enclosure and other parts, and that, in the event of such damage, the toy must not be used with this transformer until the damage has been repaired."
15. The toy is not intended for children under 3 years old.
16. The toy must only be used with the recommended charger.
17. The charger is not a toy.
18. Toys liable to be cleaned with liquid are to be disconnected from the charger before cleaning.
19. Check the equipped charger periodically and carefully.
20. Check the Harness, Socket, Accessories, and other Components all in good condition or not, repair or replace them if any problem found.

## WARNING

For the safety of your baby, please take attention about the following:

1. Adult assemble only!
2. Choking hazard small parts, not for children under 3 years old!
3. Don't give the tool to child in order to avoid open the protector on the top of the battery.
4. Recharge must be performed by Adult.
5. Keep plastic bags away from child suffocation.

## MAINTENANCE

1. Before assembling, please check all parts are complete, if there is any lack, please contact us.
2. Please inspect all function/parts when assemble/use often.
3. Please make cleaning treatment for this product termly and don't destroy any parts.
4. In order to keep your child safe, please inspect and maintain car periodically.