

Camera View Angle Adjustment

Please note that the body of the camera can be rotated for alignment after installation. You can rotate the body of camera for correct view angle.



Body rotates for alignment

CAUTION

1. This CCD camera is for 12V vehicle only.
2. Only use the included cable for wiring. Damage may occur if any other cable is used.
3. Ensure the disconnection of car battery before wiring in order to avoid short circuit.
4. Ensure wiring is tidy and safe. Keep away from moving objects and hot parts.
5. This CCD camera is a supplementary aid for reversing/parking. Never watch only the image on screen while reversing/parking.
6. Gently clean the lens with soft cloth with water. Never use cleaning materials.
7. **Do not wash with high pressure washing equipment.**
8. Not suitable for night-time use.

SPECIFICATIONS FOR CCD CAMERA

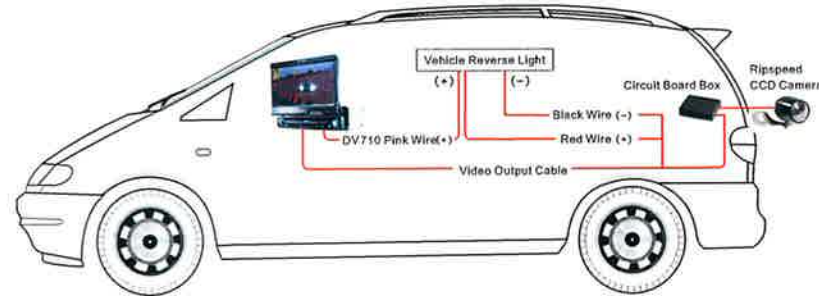
1. Power: DC12V, 75mA (+/-10%)
2. Pixels: 512(H) x 582 (V) / PAL
3. Illumination: Color / 0.3 Lux
4. Water Proof
5. TV Line: Color 380
- View Range: 150 degrees (DIAGONAL).

REAR VIEW CCD CAMERA

WIRING / This CCD camera is equipped with the selection of MIRROR or NON MIRROR effect.

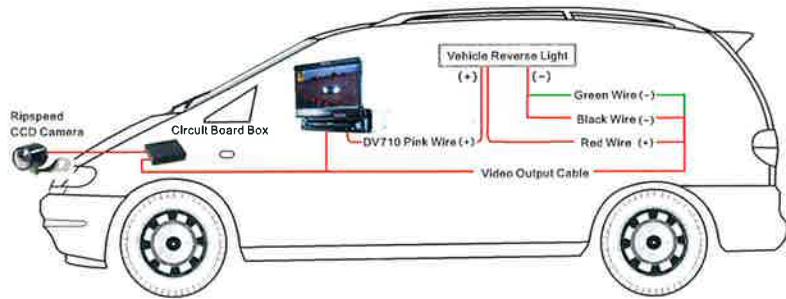
For Ripspeed DV710 All In One DVD / MIRROR Effect Connection

1. Connect Ripspeed DV710 pink wire (with label reading "REVERSE") to the positive (+) of vehicle reverse light.
2. Connect CCD camera red wire (+) to the positive (+) of vehicle reverse light.
3. Connect CCD camera black wire (-) to the ground.
4. Connect CCD camera video output to Ripspeed DV710 video input (with label reading "CAMERA")
5. Usually, the MIRROR effect is necessary for the camera to be installed on the rear of the vehicle.



For Ripspeed DV710 All In One DVD / NON MIRROR Effect Connection

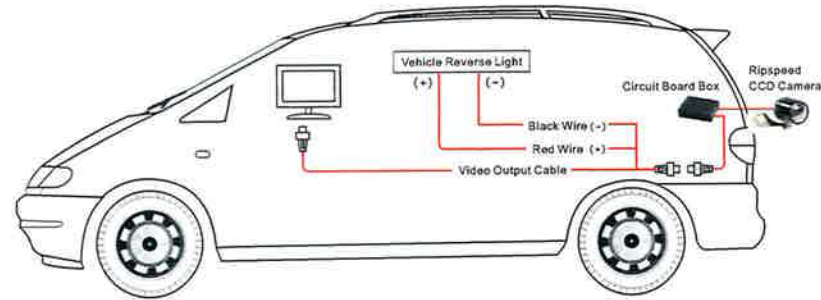
1. Connect Ripspeed DV710 pink wire (with label reading "REVERSE") to the positive (+) of vehicle reverse light.
2. Connect CCD camera red wire (+) to the positive (+) of vehicle reverse light.
3. Connect CCD camera black wire (-) to the ground.
4. **Connect CCD camera green wire (-) to the ground for NON MIRROR effect.**
5. Connect CCD camera video output to Ripspeed DV710 video input (with label reading "CAMERA")
6. Usually, the NON MIRROR effect is necessary for the camera to be installed on the side or front of the vehicle.



2

For Other Non-Ripspeed Screen Device / MIRROR Effect Connection

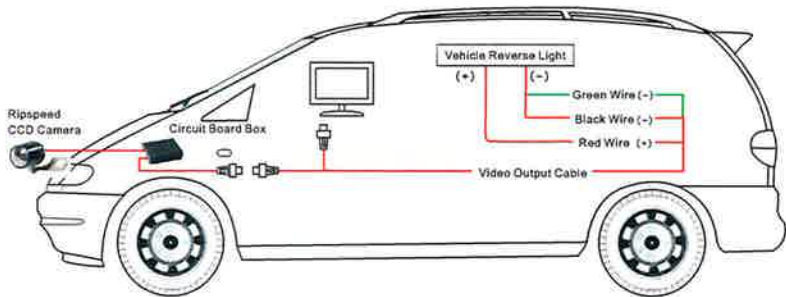
1. Ensure your device is equipped with rear view camera function such as video input lead.
2. Connect CCD camera red wire (+) to the positive (+) of vehicle reverse light.
3. Connect CCD camera black wire (-) to the ground.
4. Connect CCD camera video output to the video input of your screen.
5. Usually, the MIRROR effect is necessary for the camera to be installed on the rear of the vehicle.



3

For Other Non-Ripspeed Screen Device / NON MIRROR Effect Connection

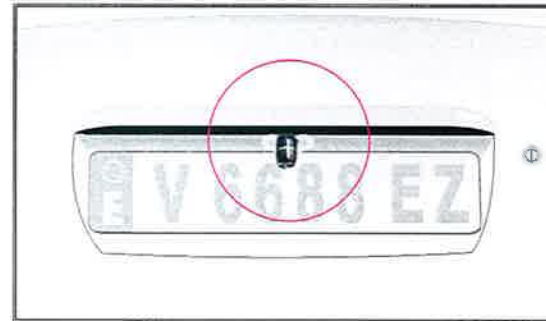
- 1.Ensure your device is equipped with rear view camera function such as video input lead.
- 2.Connect CCD camera red wire (+) to the positive (+) of vehicle reverse light.
- 3.Connect CCD camera black wire (-) to the ground.
- 4.Connect CCD camera green wire (-) to the ground for NON MIRROR effect.
- 5.Connect CCD camera video output to the video input of your screen.
- 6.Usually, the NON MIRROR effect is necessary for the camera to be installed on the side or front of the vehicle.



4

INSTALLATION**Number Plate Installation**

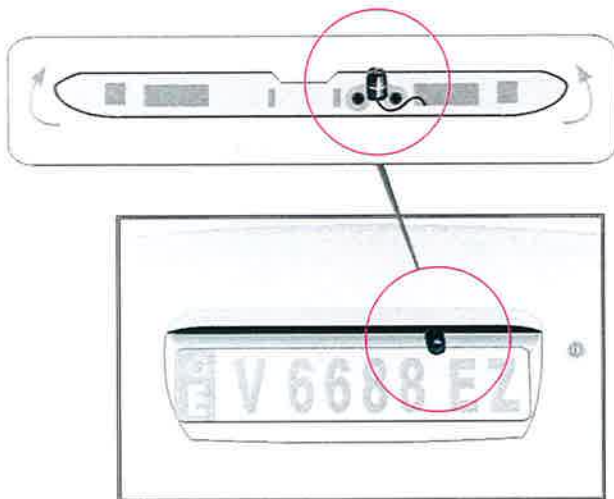
- 1.Take the number plate off. Consult a qualified technician if you are in doubt.
- 2.Hide the cable and circuit board box inside the room of boot lid.
- 3.Select the desire mounting location on the number plate:
 - a.It is suggested to offer a temporary fix of CCD camera on the plate to ensure the angle meets driver's view.
 - b.The CCD camera **MUST NOT** obstruct the reading of any number plate number or character. Failure to do so may violate Road Traffic Act.
 - c.Avoid mounting positions under a direct light source.
- 4.Ensure the mounting surface is clean using suitable solvent e.g. methylated spirits.
- 5.Peel off the double adhesive pad backing and apply to mounting bracket.
- 6.Press firmly into position. Avoid moving your car for 8 hours to allow adhesive to cure completely.
If mounted with screws (included), ensure it does not cause damage to concealed wiring.
- 7.Replace the number plate and boot lid.



5

Installation Below The Boot Lid

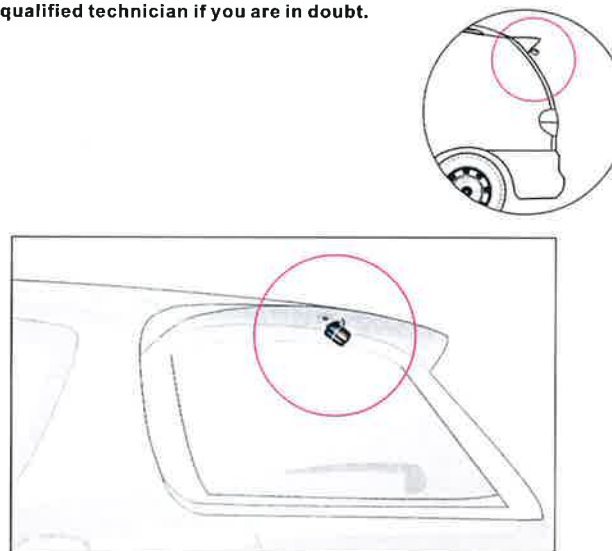
1. Consult a qualified electrician if in doubt.
2. Select the desire mounting location on the boot lid and attach the camera below boot lid.
3. Ensure the mounting surface is clean using suitable solvent e.g. methylated spirits.
4. Peel off the double adhesive pad backing and apply to mounting bracket.
5. Press firmly into position. Avoid moving your car for 8 hours to allow adhesive to cure completely. If mounted with screws (included), ensure it does not cause damage to concealed wiring.
6. Insert the cable and circuit board box through the hole of the number plate light.
7. Fix the circuit board box on the chamber behind the boot lid (suggested).



6

The Installation For Underneath of Rear Spoiler

1. Select the desire mounting location on the underneath of rear spoiler and attach the camera below the rear spoiler.
2. Ensure the mounting surface is clean using suitable solvent e.g. methylated spirits.
3. Peel off the double adhesive pad backing and apply to mounting bracket.
4. Press firmly into position. Avoid moving your car for 8 hours to allow adhesive to cure completely. If mounted with screws (included), ensure it does not cause damage to concealed wiring.
5. Hide the cable and circuit board box inside the room of back door.
6. Consult a qualified technician if you are in doubt.



7