

Information on Waste Disposal for Consumers of Electrical & Electronic Equipment

This mark on a product and/or accompanying documents indicates that when it is to be disposed of, it must be treated as Waste Electrical & Electronic Equipment (WEEE).



Any WEEE marked waste products must not be mixed with general household waste, but kept separate for the treatment, recovery and recycling of the materials used.

For proper treatment, recovery and recycling; please take all WEEE marked waste to your Local Authority Civic waste site, where it will be accepted free of charge.

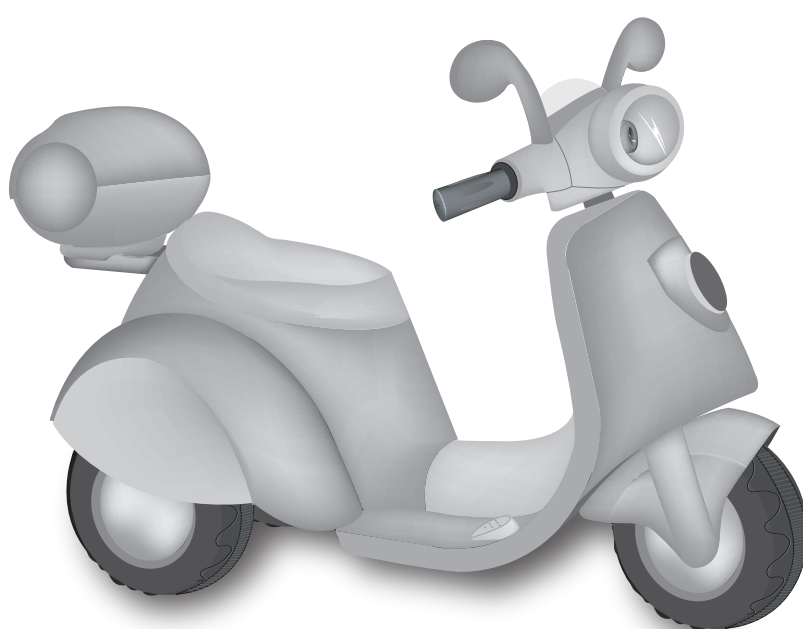
If all consumers dispose of Waste Electrical & Electronic Equipment correctly, they will be helping to save valuable resources and preventing any potential negative effects upon human health and the environment, of any hazardous materials that the waste may contain.

Please Recycle Your Spent Batteries

Batteries should not be disposed of in unsorted municipal waste, but separately collected to facilitate the correct treatment and recycling of the substances they contain. The recycling of batteries ensures the recovery of these valuable materials and prevents any potentially harmful effects upon both the environment and human health.

Please contribute to battery recycling by segregating all spent batteries and actively participating in their collection and recycling. Various battery collection schemes will be in operation in different areas of the country. However, battery collection bins will be available at retail stores that sell batteries as well as at schools, libraries and other public buildings.

INSTRUCTION MANUAL



- With forward and reverse drive
- Multi function steering / handle bars with sound and light functions
- Rubber tread band to prolong the life of the tyres and improve grip
- Rear Top Box for storage
- Wing Mirrors

● Thank you for purchasing our ride on vehicle, we wish your child enjoy it for years to come. Please read the instruction guide carefully before using it.

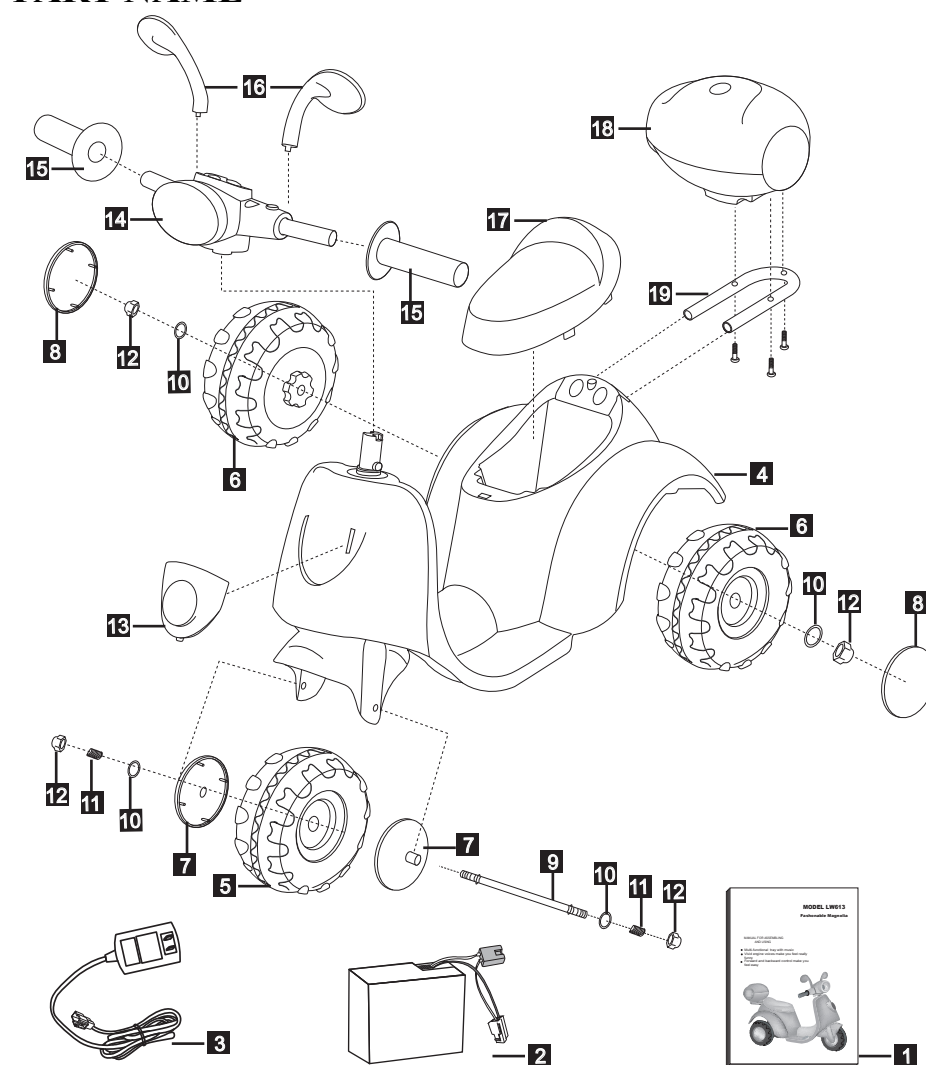
SPECIFICATION

NAME	SPEC
Battery	6V4AH
Motor	6V 15W
Age	3-5 years
Max. Load	25kg
Size	740X375X576 mm
Speed	2.5 km/h
Time for use	Charge 8-12 hours use 1-2hours
Charger	Output DC6.0V 0.6A
Fuse	20A

NOTES OF CHARGING

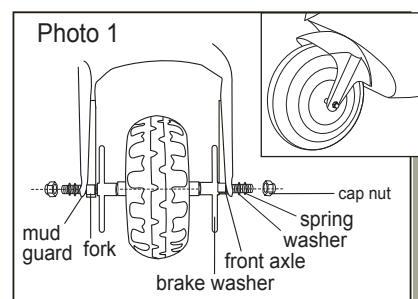
1. Before your first driving, charge the battery for 12 hours before the vehicles first used.
2. Connect the terminal of battery and charger and then plug the charger into the 230V-240V AC mains socket.
3. Please charge 8-12hrs after driving 1-2hrs. The charging time cannot exceed 20hrs.
4. When the riding speed is slower than the normal level, recharge right now for 8-12 hrs.
5. If the car has a long time not being used, please fully charge battery, then charge once per 3 months to extend the battery's life.
6. If the charger is hot (but under 71°C) while charging, that's normal.
7. The socket of the charger cannot have water, or short circuit may happen.
8. The car must use the special charger supplied with it, to avoid damage of the charger battery and circuit.
9. Battery charging must be performed by adult.
10. Non-rechargeable batteries must not be recharged.
11. Only batteries of the same or equivalent type as recommended are to be used.
12. Batteries must be inserted with the correct polarity.
13. Exhausted batteries should be removed from the body.
14. The supply terminals must not be short circuit.
15. Do not mix old and new batteries.

PART NAME

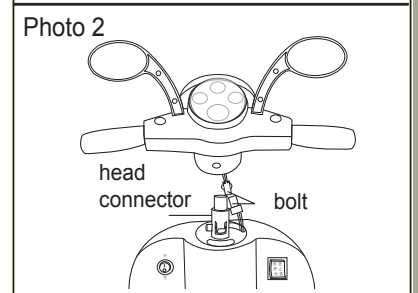


1 Manual	8 Rear Brake disk	15 Handle
2 Battery	9 Front axis	16 Rearview mirror
3 Charger	10 Washer	17 Seat
4 Car body	11 Spring	18 Tool box
5 Front wheel	12 Locknut	19 Frame
6 Rear wheel	13 Front Decorative pieces	
7 Front Brake disk	14 Handlebar	

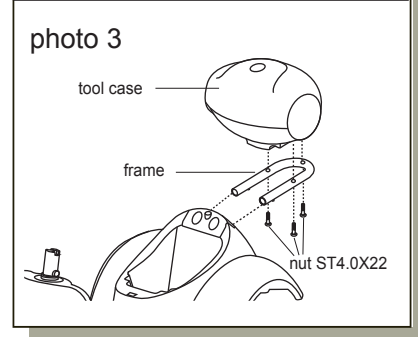
ASSEMBLE INSTRUCTION



1. Install the front wheel (photo1)
  - a. Put the front axle through the mud guard, fork, brake washer, front fork, mud guard.
  - b. Put the spring, washer through both sides of the front axle, then tighten the nuts.

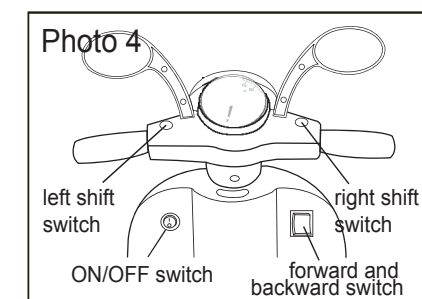


2. Install the head parts (photo 2)
  - a. Connect the handle bar connector to the connector in the body.
  - b. Carefully place the wires and connectors into the body.
  - c. Ensure that the wires are not pinched and push the handle bar into the body of scooter.

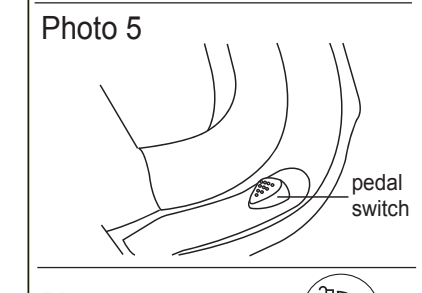


3. Install the tool box (photo3)
  - a. Pass three bolts through the holes of tool box and its frame, then tighten the nuts with a spanner.
  - b. Carefully locate the frame into the body at the rear of the scooter. Push the top box and frame completely home until the locking clips locate.

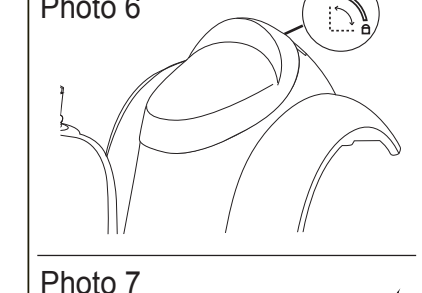
USING INSTRUCTION



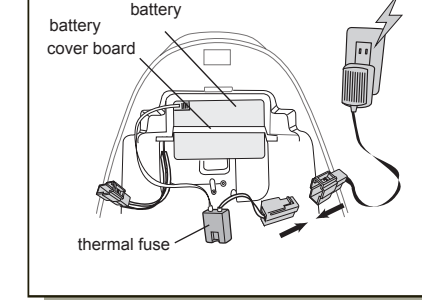
1. For the scooter to move forward:
  - a. Ensure the on/off switch is in the "1"(on) position
  - b. Put the forward/Reverse switch to forward position.
  - c. Press the pedal switch with your foot and the scooter will move forward (be sure the path in front of you is clear from obstructions).



2. For the scooter to move backward:
  - a. Ensure the on/off switch is in the "1"(on) position.
  - b. Put the forward/reverse switch to Reverse/backward position.
  - c. Press the pedal switch with your foot and the scooter will move in backward (be sure the path backward is clear from obstructions).



3. When there is not enough power for the battery, please charge it in time. When charging, please take the saddle off first, unplug the battery connector, connect the battery connector and charger connector, then the charger can be connected to AC mains.



4. This product is used the recoverable over-current fuse. When the current is more than 20A, it will cut off the power supply automatically, and will resume automatically within 5—10 seconds.

TROUBLE SHOOTING

Trouble Types	Cause Analysis	Removing method
cannot move	1. low voltage 2. wheel fixing pin loose 3. battery terminal connector detach 4. battery damaged 5. Electric parts broken 6. motor broken 7. R/C battery no power	recharge battery fix the pin again re-connect  change new battery repair repair change new battery
Fail to charge	1. battery terminal connector loose 2. no power 3. charger broken	connect again connect again change charger
cannot move long	1. battery is not full 2. battery aging	recharge battery full change battery
battery has voice and heat when charging	1. Chemical Reaction	normal
Speed slow	1. old battery 2. no power 3. over load  4. road is not level	change battery recharge full weight should be under 25kg move on the level road
Noise of gear box	1. gear broken	repair
car shaking	1. loose contact of motor 2. motor contact	re-connect re-connect
car moving but sound/light function bad	1. loose contact of steering wheel connector 2. sound-light board broken	re-connect repair
cannot stop the car	1. Electric part damaged	repair

If cannot remove the troubles, please contact for repairing service.

CAUTIONS

1. Must not ride on the street, highway, slope, sand, or any dangerous places.
2. Must ride on even ground.
3. Must ride without overload.
4. Battery charging must be performed by adult..
5. Children's riding must be guided by adults.
6. Do not change the circuit of the vehicle or it's attaching electric equipments.
7. Do not ride in water, or other fluid to the vehicle.
8. Do not push Backward/Forward switch when riding.
9. When meeting barriers, just loose the pedal switch, turn away from the barriers, march on.
10. Please charge in time when the vehicle runs slowly otherwise life-span of battery will be reduced.
11. Please charge the battery fully, before keep it for long time then recharge it per 3 months to prolong life-span of battery.
12. Don't ride in a rainy day.
13. Battery, charger, electric wire, plug, enclosure and other parts should be periodically check for damage, if have damage, and need to repair before use.
14. Transformers used with the toy are to be regularly examined for damage to the cord, plug, enclosure and other parts, and that, in the event of such damage, the toy must not be used with this transformer until the damage has been repaired.
15. The toy is not intended for children under 3 years old.
16. The toy must only be used with the recommended charger.
17. The charger is not a toy.
18. Toys liable to be cleaned with liquid are to be disconnected from the charger before cleaning.
19. Check the equipped charger periodically and carefully.
20. Check the Harness, Socket, Accessories, and other Components all in good condition or not, repair or replace them if any problem found.

WARNING

For the safety of your baby, please take attention about the following:

1. Adult assemble only!
2. Choking hazard small parts, not for children under 3 years old!
3. Don't give the tool to child in order to avoid open the protector on the top of the battery.
4. Recharge must be performed by Adult.
5. Keep plastic bags away from child to avoid suffocation.
6. Adult guidance for using.

MAINTENANCE

1. Before assembling, please check all parts are complete, if there is any lack, please contact us.
2. Please inspect all cleaning/parts when assemble/ use often.
3. Please make cleaning treatment for this product timely and don't destroy any parts.
4. In order to keep your child safe, please inspect and maintain car periodically.